

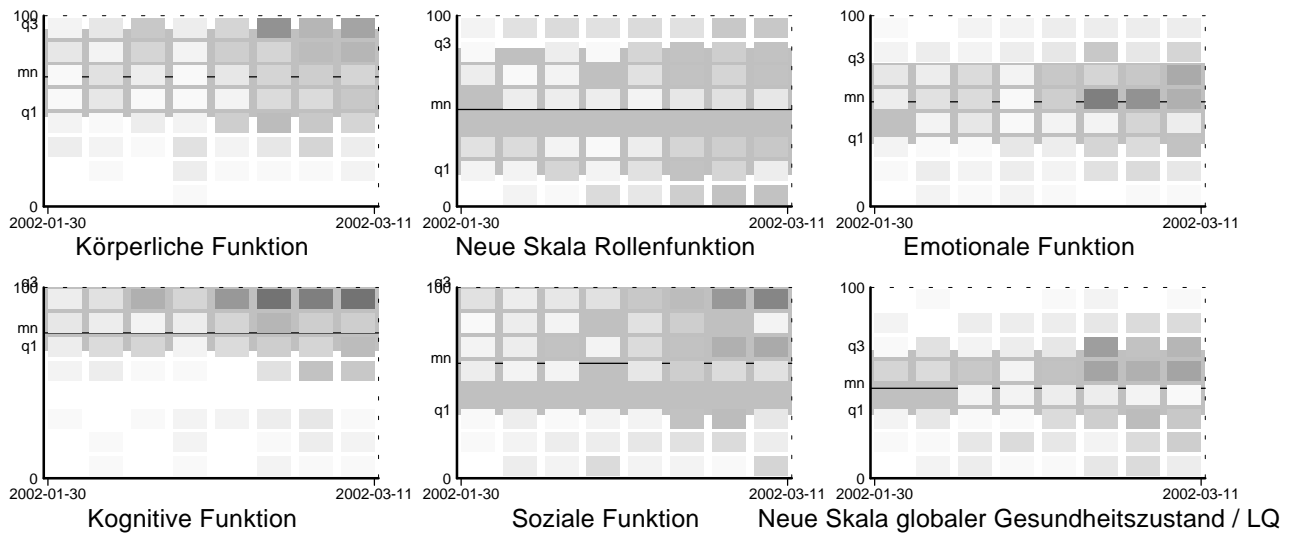
Course-over-time printout

xres=8 yres=8 nmax=300 Forced display start: - end: -
 X display range represents complete range of all dates-of-test in *.ANQ files referenced by *.LST file.
 Fixed bar width kept even if number of dates-of-test in data is lower than desired X resolution.
 Autospreading of white<->black to 0<->highest-number-of-entries-in-a-single-bin in questionnaire (h=42).
 Analyzed data: n=269 Dates of tests: 2002-01-30 - 2002-03-11 (dt=41 d)

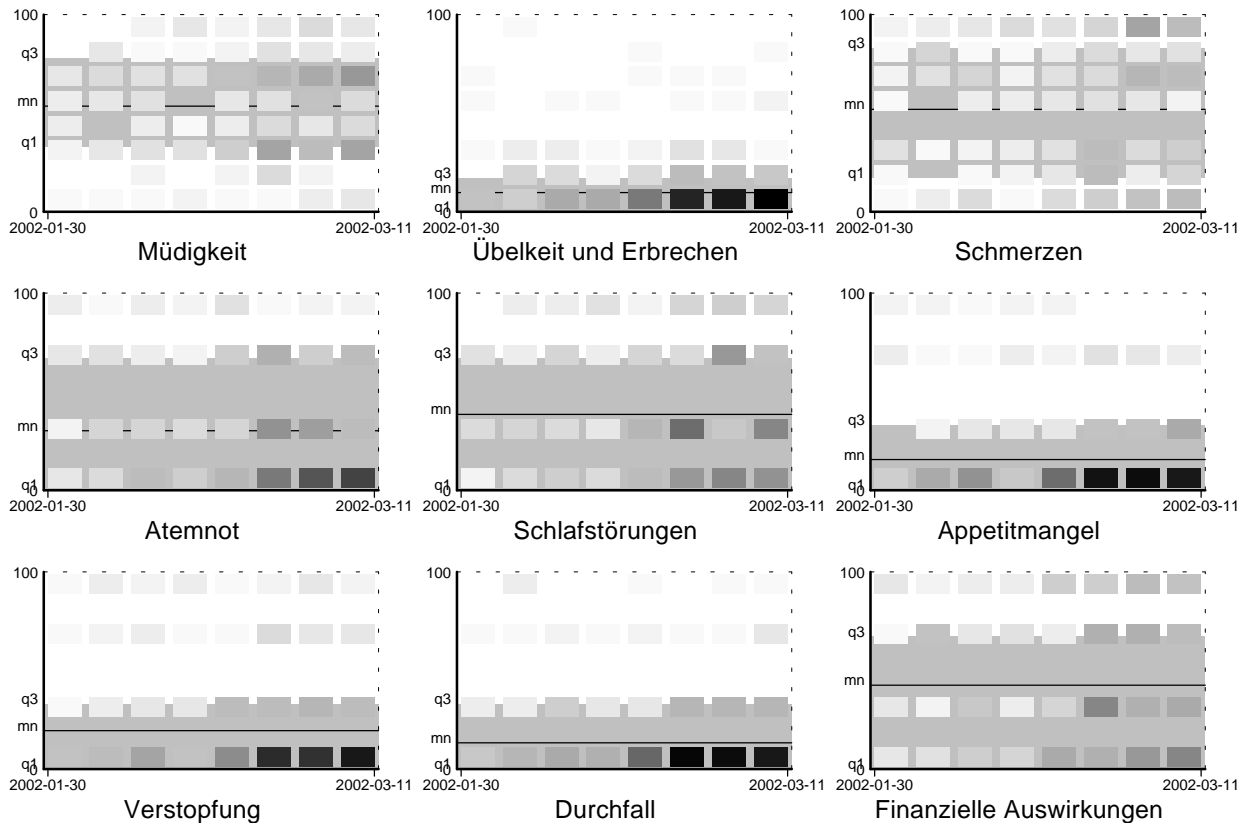
Meßergebnisse:

ALLE.LST

Funktionen: Höhere Werte sind günstig.



Symptome: Tiefere Werte sind günstig.



— mn = Mean of 300 most recent measurements

■ [q1..q3] = Interquartile range of 300 most recent measurements